



CFL cargo s.a. - Company ID

CFL cargo

With 300 employees, a fleet of more than 70 locomotives and 3100 wagons, CFL cargo offers customer-orientated services, including international long distance rail freight transport, regional rail freight trains and local feeder services, shunting and marshalling yard operations and oversize load transportation.

History

- 1997:** creation of EuroLux Cargo
- 2006:** creation of CFL cargo and its subsidiaries
CFL cargo Deutschland & CFL cargo Danmark
- 2008:** CFL cargo takes over Ateliers de Pétange
- 2010:** creation of CFL Fret Services France,
renamed CFL cargo France in 2013
- 2012:** acquisition of CFL cargo Sverige
- 2014:** reorganisation of the freight activities of the CFL group,
closer cooperation with CFL multimodal and its subsidiaries

Headquarters

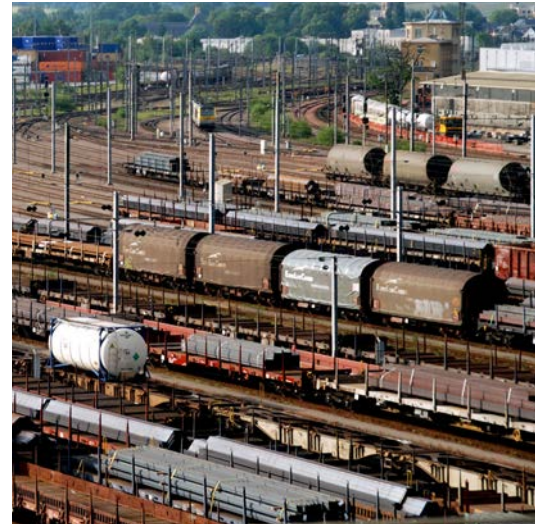
Terminal Intermodal
Eurohub Sud
L-3434 Dudelange

Subsidiaries

CFL cargo Danmark
CFL cargo Deutschland
CFL cargo France
CFL cargo Sverige
CFL technics

Shareholders

66.7% CFL / 33.3% ArcelorMittal



ECOlogistics for our future



Board of Administrators

Marc Wengler, President
Nico Reuter, Vice-president
Félicie Weycker, Jeannot Waringo,
Airy Weinzoepflen, Paul Tetteroo, Arnaud Desmonts,
Jean-Claude Bernardini, Thierry Laux,
Mylène Wagner-Bianchy, Georges Merenz,
Fraenz Benoy

Management

Laurence Zenner, CEO
Ghislain Bartholomé, COO

Employees

336 (December 2016)

Turnover

131 M € in 2016

Certifications

ISO 9001
OHSAS 18001
AEO
ECM
SMS
SQAS
Safety certificate Part A (SMS),
Part B for Luxembourg, France & Belgium

VAT Number

TVA LU 172 330 26

Bank account

BCEELULL:
IBAN LU86 0019 1300 2377 5000

CR Number

R.C. Luxembourg B60314

