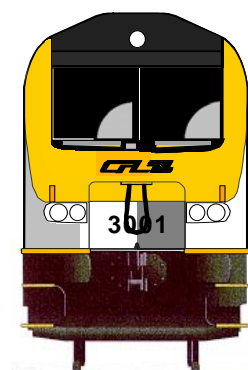


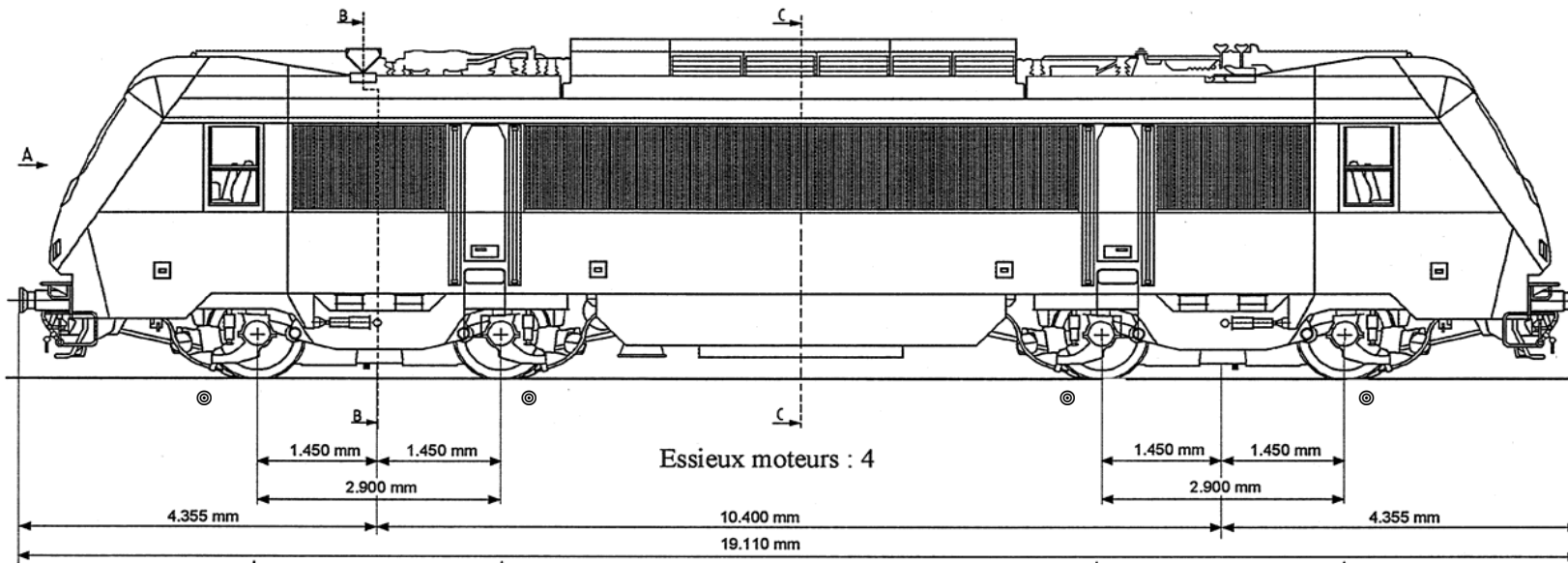
Locomotive électrique bitension S.N.C.B. - C.F.L. série 3000



SOCIÉTÉ NATIONALE DES CHEMINS
DE FER LUXEMBOURGEOIS

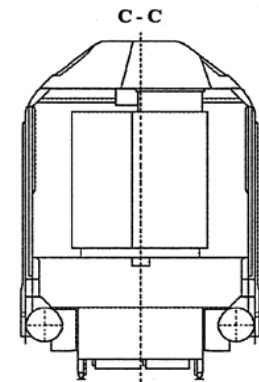
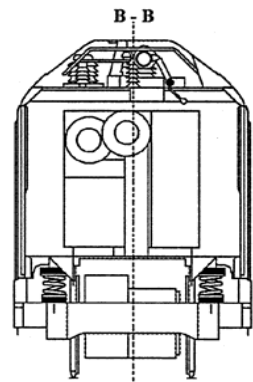
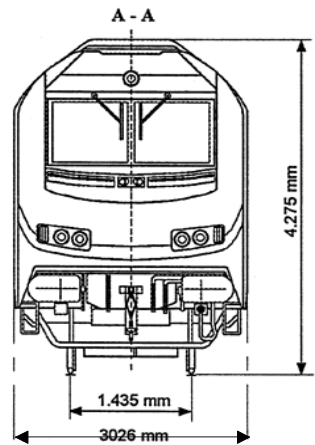
Service Matériel

Locomotive électrique bitension S.N.C.B. - C.F.L. série 3000



22,5 t 22,5 t

22,5 t 22,5 t



Essieu freiné: ⊙